

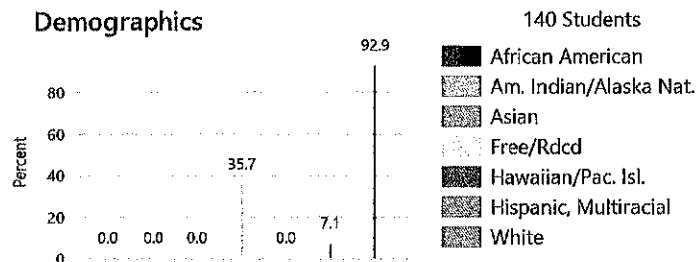
KANSAS STATE DEPARTMENT OF EDUCATION K.S.A. 72-5178 ACCOUNTABILITY REPORT 2023-2024



Troy Elem - Troy Public Schools USD 429

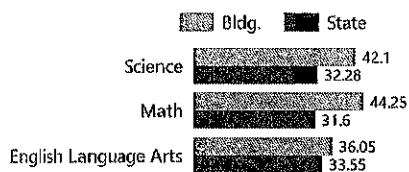
230 W Poplar, Troy, KS 66087
(785) 985-3538
www.troyusd.org
Principal: **Allisha Engemann**

System Accreditation Status: **Accredited**
ESSA Annual Meaningful Differentiation: **Meeting**
Grades: **PK-5**
Superintendent: **Patrick McKernan**

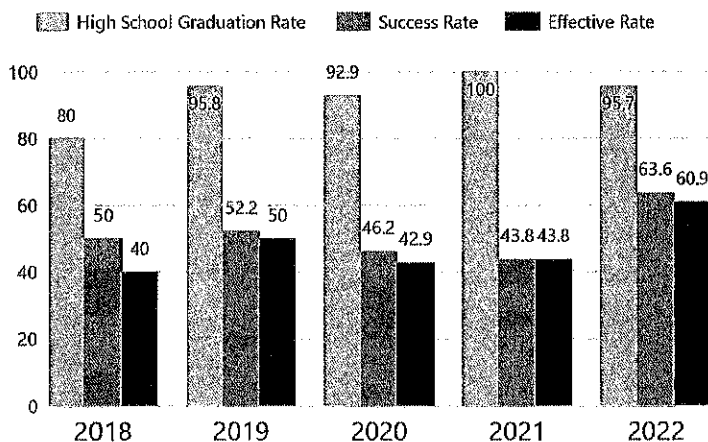


Academically Prepared for Postsecondary Success

The percentage of students who scored at Levels 3 and 4 on the state assessment.



District Postsecondary Effectiveness



District Kansans Can Star Recognition

	Gold	Silver	Bronze	Copper
Social-Emotional Growth				
Kindergarten Readiness				
Individual Plan of Study				
Academically Prepared for Postsecondary				
Civic Engagement				
High School Graduation				
Postsecondary Success				

Kansans CAN
lead the world!
Graduation
95%
Effective Rate 70-75%

Five-Year Graduation Avg.
92.8%

Five-Year Success Avg.
51.5%

Five-Year Effective Avg.
47.7%

95% Confidence Interval
for the Predicted
Effectiveness Rate
55.0 - 57.8%

The numerator and denominator in the Five-Year Averages contain total student counts over five years (2018-2022) and are rounded to the nearest whole number.

Graduation Rate: The 4-year adjusted cohort graduation rate is the number of students who graduate in four years with a regular high school diploma divided by the number of students who entered high school as 9th graders four years earlier (adjusting for transfers in and out).

Success Rate: A student must meet one of the four following outcomes within two years of High School graduation.

1. Student earned an Industry Recognized Certification while in High School.
2. Student earned a Postsecondary Certificate.
3. Student earned a Postsecondary Degree.
4. Student enrolled in Postsecondary in both the first and second year following High School graduation.

Effective Rate: The calculated Graduation Rate multiplied by the calculated Success Rate.

GRADUATION RATE

The four-year adjusted cohort graduation rate is the percentage of students in a cohort, adjusted for transfers into and out of the school, district, or state, who graduate with a regular high school diploma within four years of entering high school.

ATTENDANCE RATE

Rate at which students are present at school, not including excused or unexcused absences.

CHRONIC ABSENTEEISM

Percentage of students who miss 10% or more of school days per year either with or without a valid excuse.

DROPOUT RATE

The dropout rate is calculated annually and reflects the number of seventh- twelfth grade students who drop out in any one school year. A dropout is any student who exits school between October 1 and September 30 with a dropout EXIT code AND does not re-enroll in school by September 30.

State: **School ESSA Operating Expenditures Per Pupil**
N/A 89.5

Expenditures reflect those for the normal day-to-day operation of schools as reported by the Local Education Agency. The following expenditures are excluded: capital outlay, school construction and building improvements, equipment and debt services.

\$16,204

State:
\$14,994

94.3% State: 93.1

17.0% State: 19.8

N/A State: 1.3

[Click here for State Financial Accountability.](#)



School Academic Success

Academically Prepared for Postsecondary Success

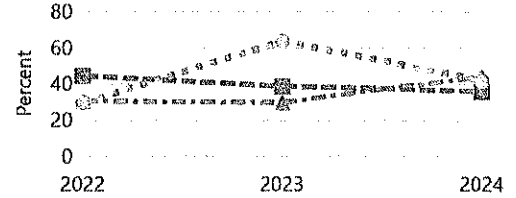
State Assessment scores are displayed by student subgroup over three years time in three subjects: Math, English Language Arts (ELA), and Science. Assessment scores are not available for the 2020 school year.

ALL STUDENTS

	2021-22			2022-23			2023-24		
	Math	ELA	Sci	Math	ELA	Sci	Math	ELA	Sci
Level 1	21.53	12.30	20.00	22.38	23.88	9.09	21.31	26.22	15.78
Level 2	47.69	43.07	50.00	47.76	37.31	27.27	34.42	37.70	42.10
Level 3	26.15	33.84	20.00	22.38	23.88	36.36	29.50	27.86	21.05
Level 4	4.61	10.76	10.00	7.46	14.92	27.27	14.75	8.19	21.05

Legend
 Math ELA Science

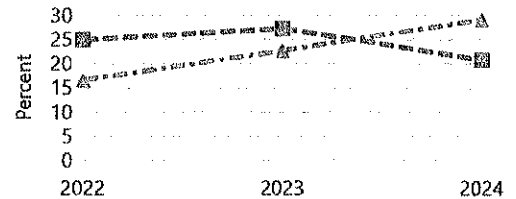
Percent at Levels 3 and 4



FREE AND REDUCED LUNCH STUDENTS

	2021-22			2022-23			2023-24		
	Math	ELA	Sci	Math	ELA	Sci	Math	ELA	Sci
Level 1	41.66	16.66	N/A	36.36	40.90	N/A	33.33	25.83	N/A
Level 2	41.66	58.33	N/A	40.90	31.81	N/A	37.50	33.33	N/A
Level 3	16.66	16.66	N/A	22.72	13.63	N/A	25.00	16.66	N/A
Level 4	0.00	8.33	N/A	0.00	13.63	N/A	4.16	4.16	N/A

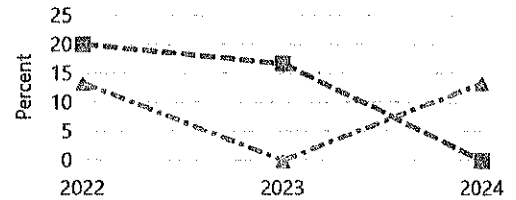
Percent at Levels 3 and 4



STUDENTS WITH DISABILITIES

	2021-22			2022-23			2023-24		
	Math	ELA	Sci	Math	ELA	Sci	Math	ELA	Sci
Level 1	46.66	20.00	N/A	50.00	55.55	N/A	60.00	73.33	N/A
Level 2	40.00	60.00	N/A	50.00	27.77	N/A	26.66	26.66	N/A
Level 3	13.33	20.00	N/A	0.00	16.66	N/A	13.33	0.00	N/A
Level 4	0.00	0.00	N/A	0.00	0.00	N/A	0.00	0.00	N/A

Percent at Levels 3 and 4



AFRICAN-AMERICAN STUDENTS

	2021-22			2022-23			2023-24		
	Math	ELA	Sci	Math	ELA	Sci	Math	ELA	Sci
Level 1	N/A	N/A	N/A	N/A	N/A	N/A	N/A	N/A	N/A
Level 2	N/A	N/A	N/A	N/A	N/A	N/A	N/A	N/A	N/A
Level 3	N/A	N/A	N/A	N/A	N/A	N/A	N/A	N/A	N/A
Level 4	N/A	N/A	N/A	N/A	N/A	N/A	N/A	N/A	N/A

Percent at Levels 3 and 4

*To protect student privacy, when a subgroup has fewer than 10 students the data are not displayed. Assessment scores are not available for the 2020 school year.

HISPANIC STUDENTS

	2021-22			2022-23			2023-24		
	Math	ELA	Sci	Math	ELA	Sci	Math	ELA	Sci
Level 1	N/A	N/A	N/A	N/A	N/A	N/A	N/A	N/A	N/A
Level 2	N/A	N/A	N/A	N/A	N/A	N/A	N/A	N/A	N/A
Level 3	N/A	N/A	N/A	N/A	N/A	N/A	N/A	N/A	N/A
Level 4	N/A	N/A	N/A	N/A	N/A	N/A	N/A	N/A	N/A

Percent at Levels 3 and 4

*To protect student privacy, when a subgroup has fewer than 10 students the data are not displayed. Assessment scores are not available for the 2020 school year.

N/A: To protect student privacy, when a subgroup has fewer than 10 students, the data are not displayed.

ACT Performance (2024 School Year)

ACT is a national college admissions exam that includes subject level tests in English, Math, Reading and Science. Students receive scores that range from 1 to 36 on each subject and an overall Composite score. This report provides the average Composite score for the 2024 graduating seniors who took the ACT as sophomores, juniors, or seniors.

Note: Not all eligible students completed an ACT.

Building

State 19.2



KANSAS STATE DEPARTMENT OF EDUCATION K.S.A. 72-5178 ACCOUNTABILITY REPORT 2023-2024

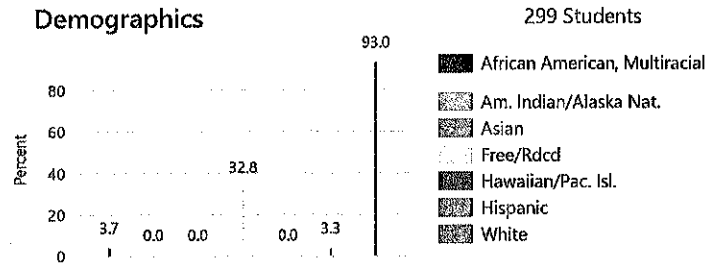
Troy Public Schools USD 429



230 W Poplar, Troy, KS 66087-0190
(785) 985-3950
www.troyusd.org

System Accreditation Status: **Accredited**
ESSA Annual Meaningful Differentiation: **Meeting**
Grades: **PK-12,NG**
Superintendent: **Patrick McKernan**

Demographics

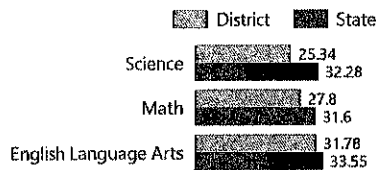


District Kansans Can Star Recognition

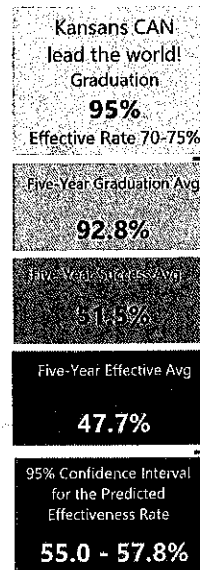
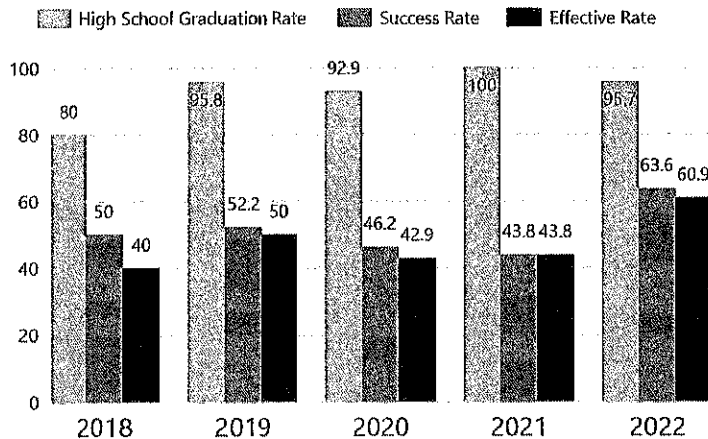
	Gold	Silver	Bronze	Copper
Social-Emotional Growth				
Kindergarten Readiness				
Individual Plan of Study				
Academically Prepared for Postsecondary				
Civic Engagement				
High School Graduation				
Postsecondary Success				

Academically Prepared for Postsecondary Success

The percentage of students who scored at Levels 3 and 4 on the state assessment.



District Postsecondary Effectiveness



Graduation Rate: The 4-year adjusted cohort graduation rate is the number of students who graduate in four years with a regular high school diploma divided by the number of students who entered high school as 9th graders four years earlier (adjusting for transfers in and out).

Success Rate: A student must meet one of the four following outcomes within two years of High School graduation.

1. Student earned an Industry Recognized Certification while in High School.
2. Student earned a Postsecondary Certificate.
3. Student earned a Postsecondary Degree.
4. Student enrolled in Postsecondary in both the first and second year following High School graduation.

Effective Rate: The calculated Graduation Rate multiplied by the calculated Success Rate.

GRADUATION RATE

The four-year adjusted cohort graduation rate is the percentage of students in a cohort, adjusted for transfers into and out of the school, district, or state, who graduate with a regular high school diploma within four years of entering high school.

ATTENDANCE RATE

Rate at which students are present at school, not including excused or unexcused absences.

CHRONIC ABSENTEEISM

Percentage of students who miss 10% or more of school days per year either with or without a valid excuse.

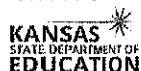
DROPOUT RATE

The dropout rate is calculated annually and reflects the number of seventh-twelfth grade students who drop out in any one school year. A dropout is any student who exits school between October 1 and September 30 with a dropout EXIT code AND does not re-enroll in school by September 30.

State: 83.3%	District ESSA Operating Expenditures Per Pupil
89.5	
State: 93.3%	Expenditures reflect those for the normal day-to-day operation of schools as reported by the Local Education Agency. The following expenditures are excluded: capital outlay, school construction and building improvements, equipment and debt services.
93.1	
State: 21.2%	
19.8	
State: 1.4%	Click here for State Financial Accountability.
1.3	

\$17,156

State:
\$14,994



Kansas leads the world in the success of each student.

Troy Public Schools USD 429

K.S.A. 72-5178 Accountability Report 2023-2024



District Academic Success

Academically Prepared for Postsecondary Success

State Assessment scores are displayed by student subgroup over three years time in three subjects: Math, English Language Arts (ELA), and Science. Assessment scores are not available for the 2020 school year.

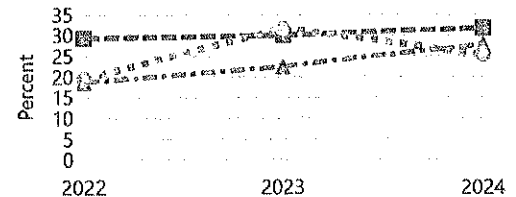
Legend

Math ELA Science

ALL STUDENTS

	2021-22			2022-23			2023-24		
	Math	ELA	Sci	Math	ELA	Sci	Math	ELA	Sci
Level 1	31.25	35.62	42.25	31.25	30.62	39.68	27.15	34.43	49.29
Level 2	50.00	35.00	38.02	46.25	39.37	28.57	45.03	39.77	25.35
Level 3	16.25	25.00	12.67	18.75	23.12	19.04	20.52	27.15	19.71
Level 4	2.50	4.37	7.04	3.75	6.87	12.69	7.28	4.63	5.63

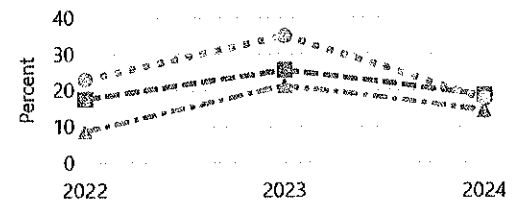
Percent at Levels 3 and 4



FREE AND REDUCED LUNCH STUDENTS

	2021-22			2022-23			2023-24		
	Math	ELA	Sci	Math	ELA	Sci	Math	ELA	Sci
Level 1	50.00	41.17	38.46	44.68	44.68	45.00	39.58	52.08	58.82
Level 2	41.17	41.17	38.46	34.04	29.78	20.00	45.83	29.16	23.52
Level 3	8.82	14.70	15.38	21.27	19.14	20.00	12.50	16.66	11.76
Level 4	0.00	2.94	7.69	0.00	6.38	15.00	2.08	2.08	5.88

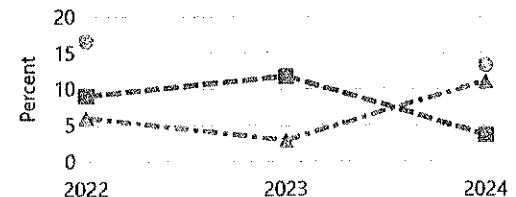
Percent at Levels 3 and 4



STUDENTS WITH DISABILITIES

	2021-22			2022-23			2023-24		
	Math	ELA	Sci	Math	ELA	Sci	Math	ELA	Sci
Level 1	66.66	54.54	75.00	61.76	52.94	N/A	62.96	70.97	53.33
Level 2	27.27	36.36	8.33	35.29	35.29	N/A	25.92	25.92	33.33
Level 3	6.06	9.09	8.33	2.94	11.76	N/A	11.11	3.70	6.66
Level 4	0.00	0.00	8.33	0.00	0.00	N/A	0.00	0.00	6.66

Percent at Levels 3 and 4



AFRICAN-AMERICAN STUDENTS

	2021-22			2022-23			2023-24		
	Math	ELA	Sci	Math	ELA	Sci	Math	ELA	Sci
Level 1	N/A	N/A	N/A	N/A	N/A	N/A	N/A	N/A	N/A
Level 2	N/A	N/A	N/A	N/A	N/A	N/A	N/A	N/A	N/A
Level 3	N/A	N/A	N/A	N/A	N/A	N/A	N/A	N/A	N/A
Level 4	N/A	N/A	N/A	N/A	N/A	N/A	N/A	N/A	N/A

Percent at Levels 3 and 4

*To protect student privacy, when a subgroup has fewer than 10 students the data are not displayed. Assessment scores are not available for the 2020 school year.

HISPANIC STUDENTS

	2021-22			2022-23			2023-24		
	Math	ELA	Sci	Math	ELA	Sci	Math	ELA	Sci
Level 1	N/A	N/A	N/A	N/A	N/A	N/A	N/A	N/A	N/A
Level 2	N/A	N/A	N/A	N/A	N/A	N/A	N/A	N/A	N/A
Level 3	N/A	N/A	N/A	N/A	N/A	N/A	N/A	N/A	N/A
Level 4	N/A	N/A	N/A	N/A	N/A	N/A	N/A	N/A	N/A

Percent at Levels 3 and 4

*To protect student privacy, when a subgroup has fewer than 10 students the data are not displayed. Assessment scores are not available for the 2020 school year.

N/A: To protect student privacy, when a subgroup has fewer than 10 students, the data are not displayed.

ACT Performance (2024 School Year)

ACT is a national college admissions exam that includes subject level tests in English, Math, Reading and Science. Students receive scores that range from 1 to 36 on each subject and an overall Composite score. This report provides the average Composite score for the 2024 graduating seniors who took the ACT as sophomores, juniors, or seniors.

Note: Not all eligible students completed an ACT.



District 18.2

State 19.2

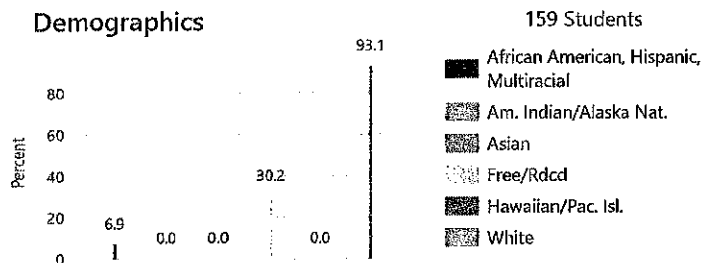
KANSAS STATE DEPARTMENT OF EDUCATION K.S.A. 72-5178 ACCOUNTABILITY REPORT 2023-2024



Troy High and Middle School - Troy Public Schools USD 429

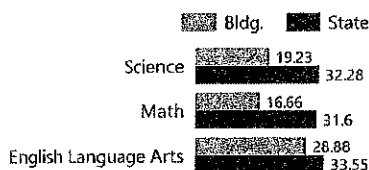
319 S Park, Troy, KS 66087
(785) 985-3533
www.troyusd.org
Principal: **Jeremy Prudden**

System Accreditation Status: **Accredited**
ESSA Annual Meaningful Differentiation: **Meeting**
Grades: **6-12**
Superintendent: **Patrick McKernan**



Academically Prepared for Postsecondary Success

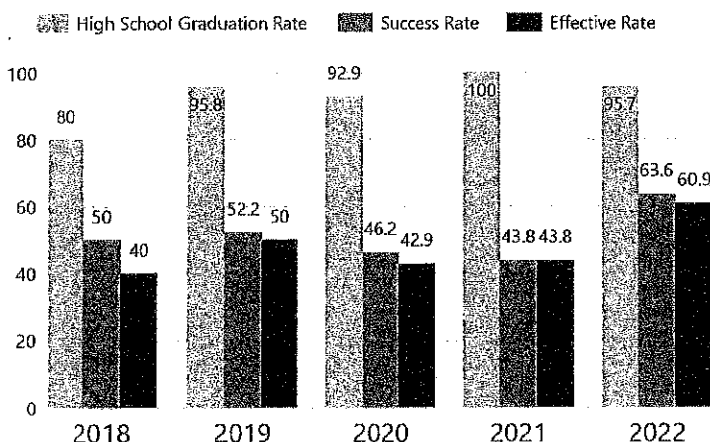
The percentage of students who scored at Levels 3 and 4 on the state assessment.



District Kansans Can Star Recognition

	Gold	Silver	Bronze	Copper
Social-Emotional Growth				
Kindergarten Readiness				
Individual Plan of Study				
Academically Prepared for Postsecondary				
Civic Engagement				
High School Graduation				
Postsecondary Success				

District Postsecondary Effectiveness



Kansans CAN lead the world!
Graduation
95%
Effective Rate 70-75%

Five-Year Graduation Avg
92.8%

Five-Year Effective Avg
47.7%

95% Confidence Interval for the Predicted Effectiveness Rate
55.0 - 57.8%

The numerator and denominator in the Five-Year Averages contain total student counts over five years (2018-2022) and are rounded to the nearest whole number.

Graduation Rate: The 4-year adjusted cohort graduation rate is the number of students who graduate in four years with a regular high school diploma divided by the number of students who entered high school as 9th graders four years earlier (adjusting for transfers in and out).

Success Rate: A student must meet one of the four following outcomes within two years of High School graduation.

1. Student earned an Industry Recognized Certification while in High School.
2. Student earned a Postsecondary Certificate.
3. Student earned a Postsecondary Degree.
4. Student enrolled in Postsecondary in both the first and second year following High School graduation.

Effective Rate: The calculated Graduation Rate multiplied by the calculated Success Rate.

GRADUATION RATE

The four-year adjusted cohort graduation rate is the percentage of students in a cohort, adjusted for transfers into and out of the school, district, or state, who graduate with a regular high school diploma within four years of entering high school.

83.3%

State: **School ESSA Operating Expenditures Per Pupil**

89.5

Expenditures reflect those for the normal day-to-day operation of schools as reported by the Local Education Agency. The following expenditures are excluded: capital outlay, school construction and building improvements, equipment and debt services.

\$16,247

State:

\$14,994

ATTENDANCE RATE

Rate at which students are present at school, not including excused or unexcused absences.

92.4%

State:

93.1

CHRONIC ABSENTEEISM

Percentage of students who miss 10% or more of school days per year either with or without a valid excuse.

24.9%

State:

19.8

[Click here for State Financial Accountability.](#)

DROPOUT RATE

The dropout rate is calculated annually and reflects the number of seventh-twelfth grade students who drop out in any one school year. A dropout is any student who exits school between October 1 and September 30 with a dropout EXIT code AND does not re-enroll in school by September 30.

1.4%

State:

1.3

Troy High and Middle School

K.S.A. 72-5178 Accountability Report 2023-2024



School Academic Success

Academically Prepared for Postsecondary Success

State Assessment scores are displayed by student subgroup over three years time in three subjects: Math, English Language Arts (ELA), and Science. Assessment scores are not available for the 2020 school year.

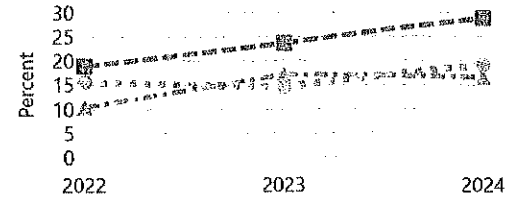
Legend

Math ELA Science

ALL STUDENTS

	2021-22			2022-23			2023-24		
	Math	ELA	Sci	Math	ELA	Sci	Math	ELA	Sci
Level 1	37.89	51.57	50.98	37.63	35.48	56.09	31.11	40.00	61.53
Level 2	51.57	29.47	33.33	45.16	40.86	29.26	52.22	31.11	19.23
Level 3	9.47	18.94	9.80	16.12	22.38	9.75	14.44	26.66	19.23
Level 4	1.05	0.00	5.88	1.07	1.07	4.87	2.22	2.22	0.00

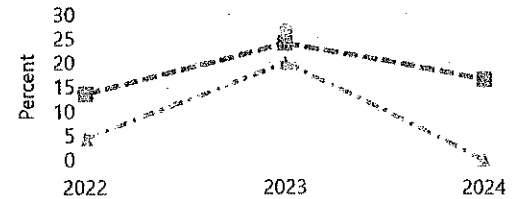
Percent at Levels 3 and 4



FREE AND REDUCED LUNCH STUDENTS

	2021-22			2022-23			2023-24		
	Math	ELA	Sci	Math	ELA	Sci	Math	ELA	Sci
Level 1	54.54	54.54	N/A	52.00	48.00	53.33	45.83	38.33	N/A
Level 2	40.90	31.81	N/A	28.00	28.00	20.00	54.16	25.00	N/A
Level 3	4.54	13.63	N/A	20.00	24.00	20.00	0.00	16.66	N/A
Level 4	0.00	0.00	N/A	0.00	0.00	6.66	0.00	0.00	N/A

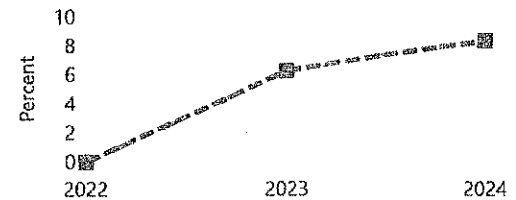
Percent at Levels 3 and 4



STUDENTS WITH DISABILITIES

	2021-22			2022-23			2023-24		
	Math	ELA	Sci	Math	ELA	Sci	Math	ELA	Sci
Level 1	83.33	83.33	N/A	75.00	50.00	N/A	66.66	66.66	N/A
Level 2	16.66	16.66	N/A	18.75	13.75	N/A	25.00	25.00	N/A
Level 3	0.00	0.00	N/A	6.25	6.25	N/A	8.33	8.33	N/A
Level 4	0.00	0.00	N/A	0.00	0.00	N/A	0.00	0.00	N/A

Percent at Levels 3 and 4



AFRICAN-AMERICAN STUDENTS

	2021-22			2022-23			2023-24		
	Math	ELA	Sci	Math	ELA	Sci	Math	ELA	Sci
Level 1	N/A	N/A	N/A	N/A	N/A	N/A	N/A	N/A	N/A
Level 2	N/A	N/A	N/A	N/A	N/A	N/A	N/A	N/A	N/A
Level 3	N/A	N/A	N/A	N/A	N/A	N/A	N/A	N/A	N/A
Level 4	N/A	N/A	N/A	N/A	N/A	N/A	N/A	N/A	N/A

Percent at Levels 3 and 4

*To protect student privacy, when a subgroup has fewer than 10 students the data are not displayed. Assessment scores are not available for the 2020 school year.

HISPANIC STUDENTS

	2021-22			2022-23			2023-24		
	Math	ELA	Sci	Math	ELA	Sci	Math	ELA	Sci
Level 1	N/A	N/A	N/A	N/A	N/A	N/A	N/A	N/A	N/A
Level 2	N/A	N/A	N/A	N/A	N/A	N/A	N/A	N/A	N/A
Level 3	N/A	N/A	N/A	N/A	N/A	N/A	N/A	N/A	N/A
Level 4	N/A	N/A	N/A	N/A	N/A	N/A	N/A	N/A	N/A

Percent at Levels 3 and 4

*To protect student privacy, when a subgroup has fewer than 10 students the data are not displayed. Assessment scores are not available for the 2020 school year.

N/A: To protect student privacy, when a subgroup has fewer than 10 students, the data are not displayed.

ACT Performance (2024 School Year)

ACT is a national college admissions exam that includes subject level tests in English, Math, Reading and Science. Students receive scores that range from 1 to 36 on each subject and an overall Composite score. This report provides the average Composite score for the 2024 graduating seniors who took the ACT as sophomores, juniors, or seniors.

Note: Not all eligible students completed an ACT.

Building 18.2

State 19.2

